

TECH-SHEET

COALESCER ELEMENT SET REPLACEMENT INSTRUCTIONS

WALKER AIRSEP CCE® SYSTEM

10" REMOTE UNIT DIESEL ENGINE (ALL APPLICATIONS)

SERVICE RECOMMENDATIONS

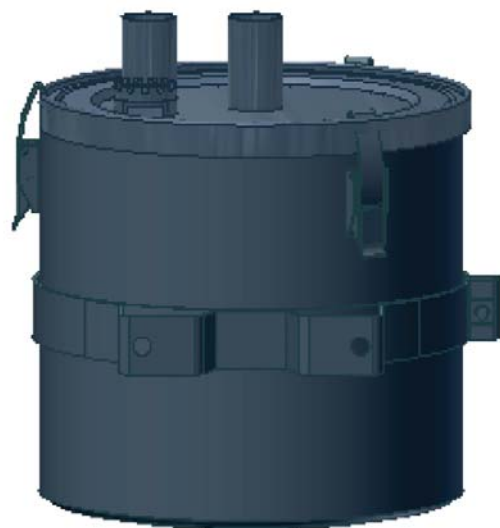
NOTE: Each Engine is different depending on manufacturer, wear, and hours accumulated, as well as in-service duty cycle. Current replacement interval for 10" XL CCE Coalescing element is 500 -1000 Hours. You may exceed this interval providing engine crankcase pressures are within engine manufacturer's recommendation. In no event should the element be in service longer than 1200 hours.

Note: You may want to use rags or shop towels to prevent dripping oil during the procedure.

- 1) Shutdown engine before servicing.**
 - 2) Un-clip fasteners at top of lid and disconnect any hose clamps attaching hoses to lid.**
 - 3) Remove lid and inspect underside of lid. You will find one (1) or (2) 1st Stage filter paks [A], (Blue Discs), remove and discard filter pak(s).**
 - 4) Install new filterpak(s) [A] as furnished in the element set.**
 - 5) Locate the "baffle opening" on the primary element [B] and be sure the open window is positioned at the BOTTOM of the element. Replace the main coalescing element [B] and verify that open window is near bottom of AIRSEP before closing. (See Illustration - shown on page 2)**
 - 6) Align lid and seat top with housing.**
 - 7) Re-install fasteners, and re-attach hoses.**
 - 8) Start engine and check for leaks. Record engine hours and initial crankcase pressures.**
- * Note: Used filter paks should be discarded properly and in accordance with any state, local, or federal disposal guidelines.**

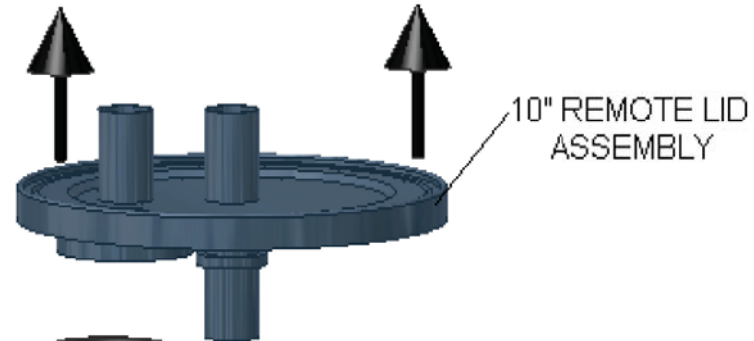
REPLACE FILTER SET WITH (40-2013) or (40-2016 -Double 1st Stage Unit)

10" CCE REMOTE AIRSEP[®]



10" CCE REMOTE AIRSEP
CAN ASSEMBLY

FIRST STAGE FILTER (A)



10" REMOTE LID
ASSEMBLY



10" CAN GASKET



10" REMOTE
BAFFLE WITH
GROMMET



10" COALESCING
FILTER WITH
BAFFLE (B)



10" REMOTE
AIRSEP CAN
WITH MOUNTING
BAND